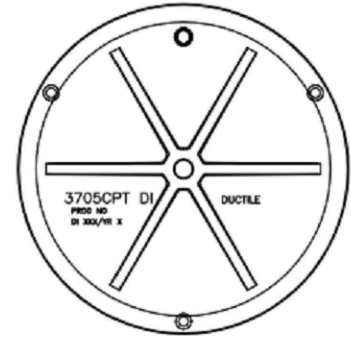
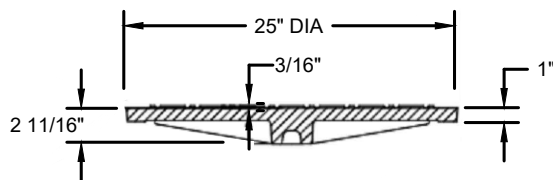


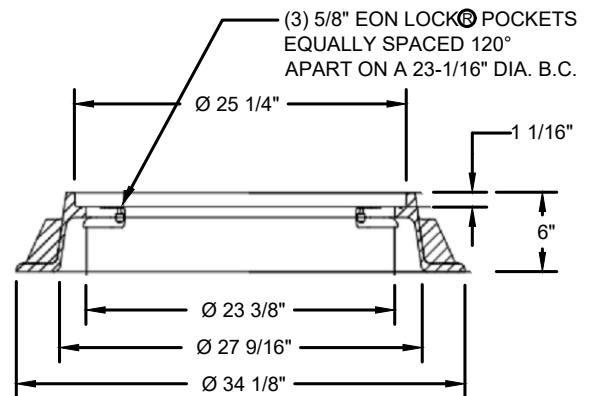
PLAN VIEW



BOTTOM VIEW



SECTION VIEW



**GENERAL NOTES:**

MANHOLE RING AND COVER SHALL BE EAST JORDAN IRON WORKS MODEL #00371564 FOR USE IN UNPAVED EASEMENT AREAS. USE UNCOATED MODEL #00370076 FOR ROADWAYS.

**COVER NOTES:**

1. USE WITH THREE LOCKING BOLTS 5/8"-11 NC STAINLESS TYPE 304 STEEL SOCKET HEAD (ALLEN HEAD) BOLTS, 3" LONG. DRILL HOLES SPACED 120°, TO MATCH HOLES IN RING.
2. COVER MATERIAL IS DUCTILE IRON ASTM A536 GRADE 80-55-06.
3. SHALL CONFORM TO SEC. 9-05.15 OF THE STANDARD SPECIFICATIONS, AS MODIFIED HEREIN.
4. APPROXIMATE WEIGHT OF COVER IS 150 LBS.
5. RATING - H30.
6. MUST MEET (AASHTO) M306 SPECIFICATIONS AND HAVE REPLACEABLE LOCK DOWN NUTS.

**RING NOTES:**

1. DRILL AND TAP THREE 5/8"-11 NC HOLES THROUGH RING AT 120°.
2. RING MATERIAL IS GRAY IRON, ASTM A-48 CLASS 30.
3. SHALL CONFORM TO SEC. 9-05.15 OF THE STANDARD SPECIFICATIONS, AS MODIFIED HEREIN.
4. APPROXIMATE WEIGHT OF RING IS 215 LBS.
5. RATING - H30.
6. USE ANTI-SEIZE ON BOLTS.



**STANDARD MANHOLE  
FRAME AND COVER**

DATE: 11-2022

DWG: S7